



think inside the box

KeyWatcher is ideal for:

- casino and gaming industries
- correctional facilities
- healthcare facilities
- hotels and resorts
- conference centers
- government agencies
- multifamily buildings
- control rooms
- corporate buildings
- educational institutions
- automotive businesses

Now there is an integrated key control and management solution that's modular, scalable and designed for interoperability with access control systems. It's KeyWatcher from Morse Watchmans, the security management company with over 100 years of service to the industry.

With KeyWatcher, access to the box and to individual keys is under your complete control. You decide who has permission to remove each key, and with KeyWatcher's advanced communications capabilities, you always know who removed any key and when it was taken. It's the solution that gives you more value, more storage and more convenient accessibility.

And because we engineered KeyWatcher with a modular design, you can configure the exact components you need like card slots and lockers, with the ability to change modules where and when you need to. KeyWatcher is scalable, too, so it can grow as your needs grow. It's all part of Morse Watchmans' outside the box thinking – that you'll find right inside the box.



the integrated access control solution

The KeyWatcher Key Management System provides a new sophisticated design and improved access control. Its illuminated key storage system makes finding keys a cinch and provides twice the amount of storage, while using minimal wall space.

Built into a rugged steel cabinet with highly illuminated key slots, the improved design makes it easier to locate keys and maximize wall space. The exterior design of the cabinet has been enhanced to blend in with today's office environments, while the key control system seamlessly controls and monitors keys.

Morse Watchmans engineered the keypad and control console of the new KeyWatcher system to be extremely user-friendly and accessible to the handicapped. The aesthetically-pleasing, smart design actually helps to reduce wall space, while providing easier access.



features and options:

- easily identify the proper keys
- return keys to any location
- rugged, functional design uses less wall space
- user interface controls various access devices
- ergonomic design offers ease of use
- backed by industry-leading warranties



vandal-resistant, scalable, and ready to communicate

Built using stainless steel, the cabinet is designed to resist abuse and is wired to alarm against tampering. Yet, the system has limitless configurations – allowing the ability to scale the key management system as needs expand.

Morse Watchmans makes it simple for you, as the KeyWatcher can hold keys of almost any size, including Folger Adam keys. Plus, the systems are capable of incorporating additional lockers for valuable items.

Each key storage system is powered by AC electricity and is supported by a 48-hour backup power supply. The system is designed with built-in RS-232 for direct connectivity to printers or other devices, or networked connectivity via Ethernet.





modular, scalable design lets you customize your KeyWatcher system

It's easy to expand KeyWatcher as your needs grow. Start with a single key management system or can be configure KeyWatcher with multiple cabinets to hold hundreds of keys. Designed with scalability in mind, each additional unit can be controlled by a single console and monitored by the advanced Key-Pro software.

Available modules include 16-key, 8-key, 6-key, credit card, and single and dual lockers. A variety of modules can be customized in 48- and 96-key cabinets. You can even create your own customized cabinet system online using our KeyWatcher Configurator at morsewatchmans.com



- expandable up to 2,000 keys
- easily and accurately control and monitor key usage
- customize cabinets with lockers and credit card holders
- locate any key with illuminated key slots
- return any key to any slot



designed for interoperability and security

KeyWatcher sounds an alarm if:

- a user tries to gain access to or dislodge a key with force
- an invalid user code is entered three times consecutively (systems go into an automatic alert mode and lock down for four minutes)
- the door is left open for more than 10 seconds after use
- a key is missing or not returned on time
- there is a power failure
- a key is returned by the wrong user
- a user forces the cabinet doors open

With a built-in keypad and up to 2,000 assignable user codes with PINs (Personal Identification Numbers), KeyWatcher provides unmatched flexibility. The system allows security managers the discretion to appoint one of five different levels of access for each employee. In addition, it offers the expandability of interfacing with a variety of access control devices.

The illuminated two line by 16 character screen clearly displays messages and user prompts for a variety of different functions, including removal and replacement of keys.

KeyWatcher has a tamper-proof mechanism that sounds an alarm and can also be wired to other sounding devices throughout the facility in case of an incident. Any PC with speakers running Key-Pro software can emit an alarm as well, and alarms can be sent automatically via email to designated managers.



smart keys provide data and convenience

Keys are secured to a Smart Key locking mechanism and memory chip for additional security and functionality. When a Smart Key is inserted into a KeyWatcher key slot, memory chip data is stored and then retrieved after a key is properly accessed. Users can only access keys from the cabinets with a proper user code, as designated by their security managers.

Smart Keys help make KeyWatcher an easy-to-use key control system. The Random Key Return feature allows users to return keys to any open location in the cabinet and the system will remember the new location for that key. This avoids confusion or misplacement error – a real time saver and convenience to each user. There is also an option available for users who prefer keys to be returned to their original location.

KeyWatcher works as a stand-alone device or in combination with Morse Watchmans Key-Pro Performance Software. The software enhances the capabilities of the system.



generate reports by:

- list of keys
- users
- keys in use
- keys removed
- keys overdue
- and more

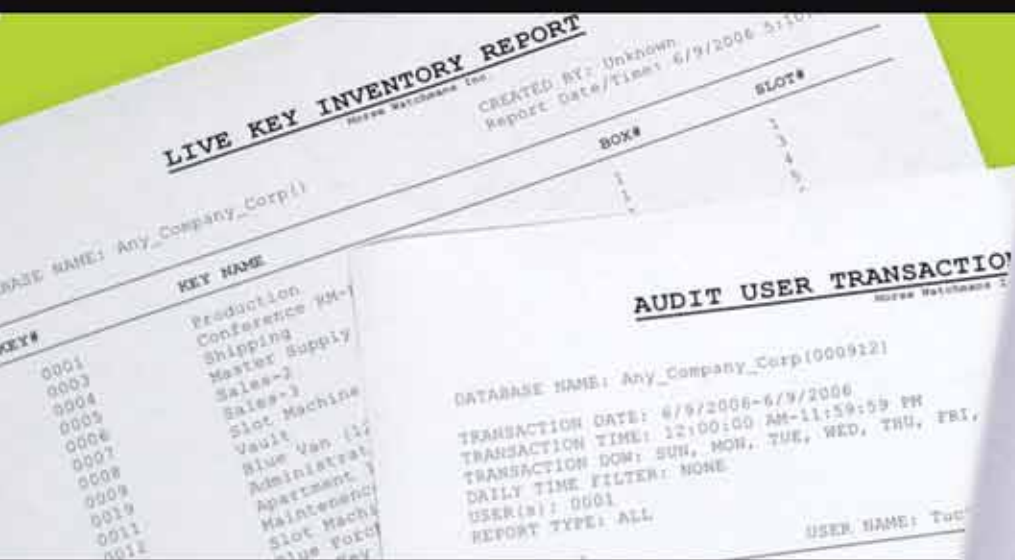
optimize performance capabilities and ROI with Key-Pro software

Maximize your key management system with user-friendly Key-Pro software. A PC application with remote access capabilities, Key-Pro lets system managers establish permission levels for each User Code and monitor data from any desktop connected to the network.

Key-Pro enhances the installation, programming, customizing, maintaining, status, alarms and reporting capabilities of each system with real-time polling transactions. System control is faster and easier.

The software can run activity reports, sort based on different criteria, view and print reports, and more. System managers can generate practical management reports, which trace key movements by time, date and user code. An audit trail report indicates the time and date of every key accessed by a user for a given time parameter.

Another key feature of the software is the built-in scheduler. This tool automatically downloads all data to a secure PC, allowing system managers to sort and analyze the information so they maintain maximum control of access and security issues.

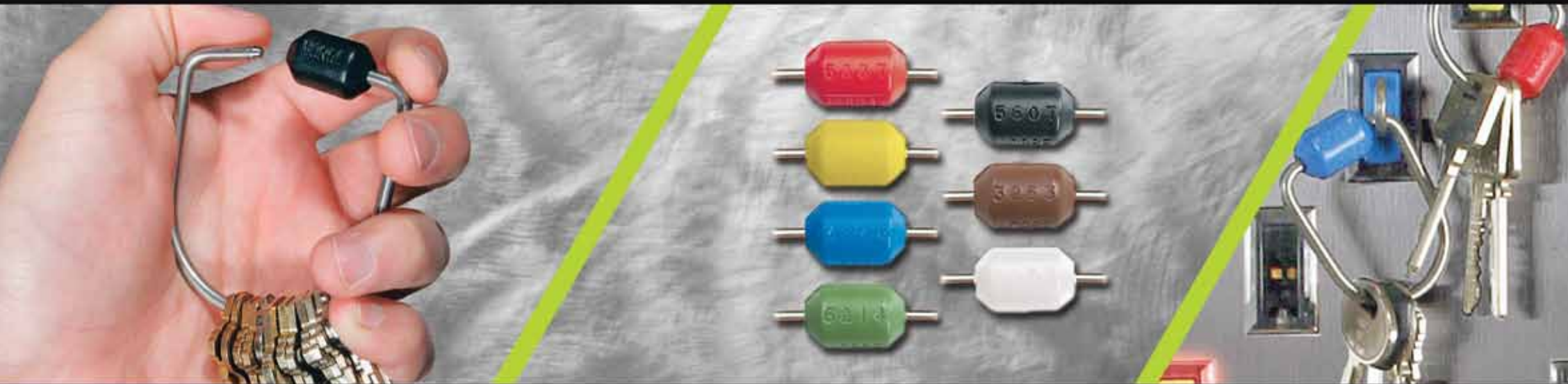


Key-Pro performance software provides:

- detailed key management reporting options
- centralized programming
- advanced network capabilities
- improved system communications
- exclusive real-time transaction polling
- priority e-mail alerts
- real-time transactions screens
- audible alarm notifications

priority email alerts:

- KeyWatcher now offers the capability to send priority email alerts to security managers, keeping them informed of the whereabouts of smart keys.



tamper-proof key-rings

Only Morse Watchmans manufactures Key-Rings™ that incorporate ease-of-use, a tamper-proof locking mechanism and unique identification system. You can add or remove keys without the need to cut through the stainless steel and destroy the entire key ring. Morse Watchmans' Replaceable Hub Technology allows you to re-use the key ring and replace the hub at a fraction of the cost. Simple to work and easy to re-use, tamper-proof Key-Rings add security and value

features:

- no tools required to close assembly
- reusable 5/32" stainless steel rings
- smart-switch solution replaces welded and crimped rings
- incorporates cost-saving replaceable hub technology
- serialized/color-coded hubs identify rings and prevent substitution





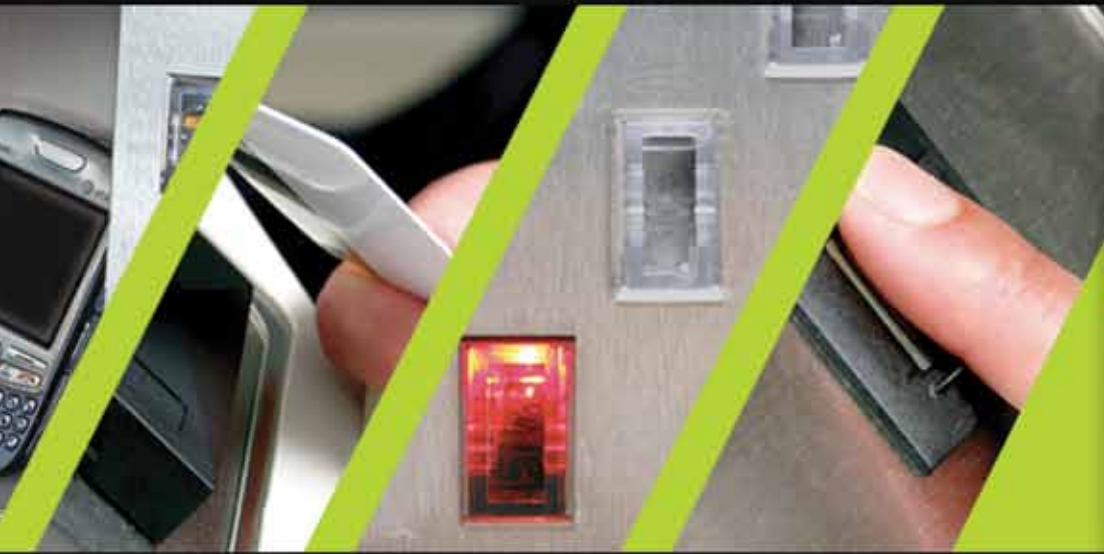
scalable key control and management solutions

- casino and gaming industries • correctional facilities
- healthcare facilities • hotels and resorts
- conference centers • government agencies
- multifamily buildings • control rooms
- corporate buildings • educational institutions
- automotive businesses
- and more

morsewatchmans.com

USA
2 Morse Road, Oxford, CT 06478
800.423.8256 • 203.264.4949
fax: 203.264.8367

UK
2 Nottingham Road, Daybrook,
Nottingham NG5 6JQ
0115-967-1567
fax: 0115-967-1306



think inside the box